

SAFETY COMES FIRST IN WAREHOUSES & DISTRIBUTION CENTERS



Honeywell

REINFORCED SAFETY REDUCES INJURIES

We continue to innovate for a safer future with ergonomically designed PPE to help optimize workers' well-being and performance.

With the rapid-fire boom in e-commerce comes a sharp uptick in the number of warehouses and distribution centers (DCs). While these environments are filled with valuable inventory, nothing surpasses the value of worker safety. As a Safety Leader, it's your job to recognize risks and provide solutions to help keep worker accidents and injuries (or worse) at bay.

RISKY BUSINESS

4.8 per 100 workers

Injury rate of US warehouse workers, much higher than average industry injury rate of 2.7 per 100 workers¹

5th most dangerous

Industry in Canada: storage & warehouse industry⁴

95K workers

Injured annually operating forklifts in all US Industries. About 100 fatalities yearly²

2/3 of accidents

On-the-job accidents in Canada are caused by slips & trips⁵

439,000

Disabling hand and finger injuries each year in the US resulting in 121,800 hours of lost labor. 70% percent of users were not wearing any hand protection³

19,297

Canadian Lost Time Claims, Diseases & Fatalities in warehouse & storage facilities in Canada in 2021⁶

5.5%

Increase in US Transportation and Warehousing businesses from 2021-present⁷

6.5 million

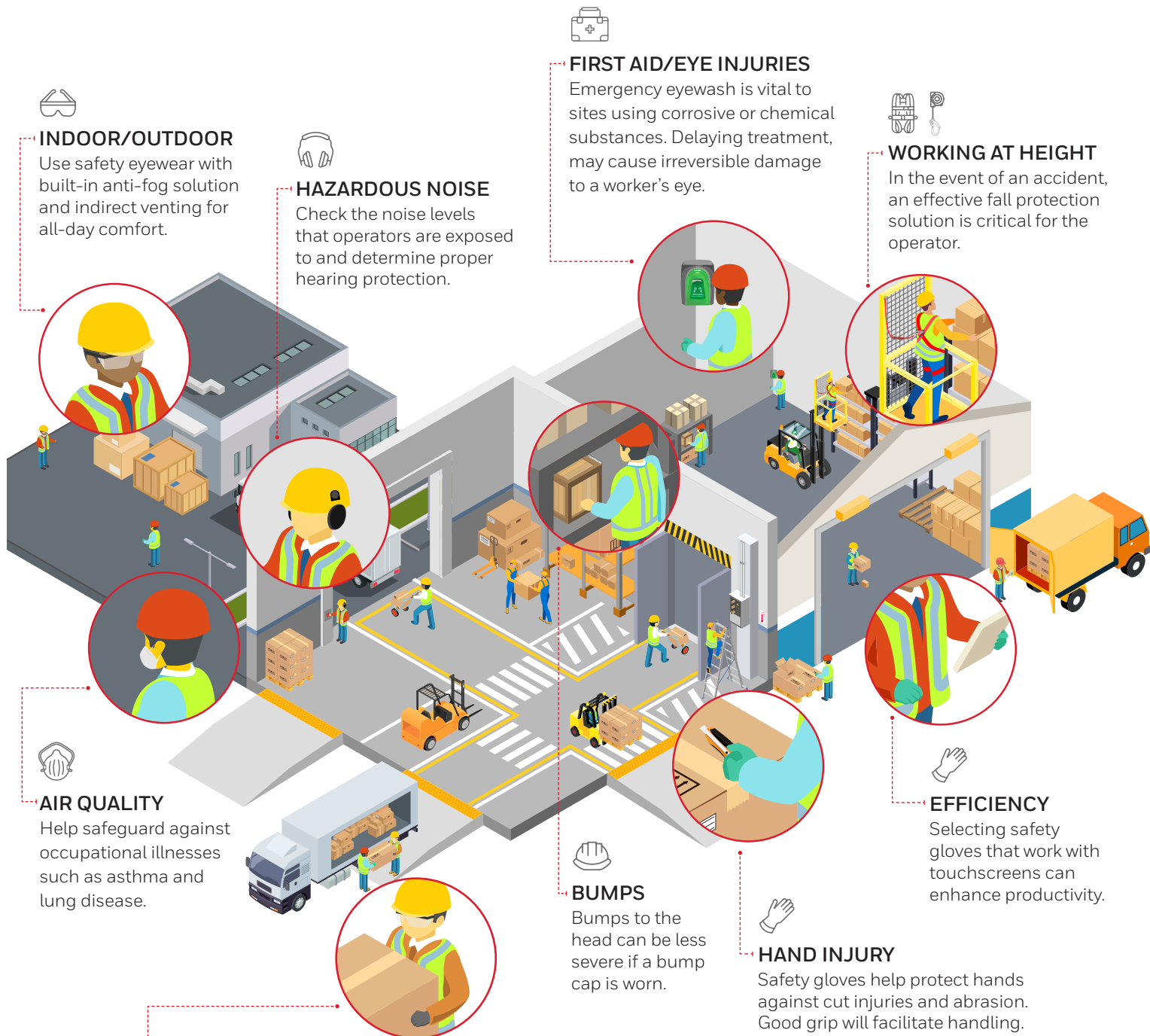
Workers in US Warehousing/ Transportation sector. Grew by more than 2M workers in the last 10 years⁸

24,736

Warehouse & storage facilities in USA & Canada in 2021⁸



DISTRIBUTION CENTERS AND LOGISTICS SOLUTIONS



INDOOR/OUTDOOR

Use safety eyewear with built-in anti-fog solution and indirect venting for all-day comfort.



HAZARDOUS NOISE

Check the noise levels that operators are exposed to and determine proper hearing protection.



FIRST AID/EYE INJURIES

Emergency eyewash is vital to sites using corrosive or chemical substances. Delaying treatment, may cause irreversible damage to a worker's eye.



WORKING AT HEIGHT

In the event of an accident, an effective fall protection solution is critical for the operator.



AIR QUALITY

Help safeguard against occupational illnesses such as asthma and lung disease.



BUMPS

Bumps to the head can be less severe if a bump cap is worn.



HAND INJURY

Safety gloves help protect hands against cut injuries and abrasion. Good grip will facilitate handling.



EFFICIENCY

Selecting safety gloves that work with touchscreens can enhance productivity.



HOT & COLD

In extreme temperatures, select anti-fog eyewear and lightweight PPE made from breathable materials.

PPE IS FUNDAMENTAL TO SAFETY

Hazards abound in warehouse environments. From heavy objects, improper stacking to unsafe use of forklifts, there's no shortage of potential dangers. While the Occupational Safety and Health Administration (OSHA)

monitors warehouse safety, they don't have specific rules and regulations for this sector. They enforce the General Duty Clause, which requires employers to provide employees with workplaces that are free from recognized hazards

likely to cause serious physical injuries or fatalities.

There are, however, OSHA standards and best practices for warehouse safety, including the need for worker PPE.

SELECTING THE RIGHT PPE

Your workers count on you to provide effective PPE. Selecting the right PPE is often difficult. At Honeywell, we protect over 500,000 workers each year. With our legacy expertise in worker protection and our relentless innovation in safety solutions, let us be your guide for PPE selection in the distribution center and logistics industry.



Hand Protection



Eye & Face Protection



Hearing Protection



Head Protection



Fall Protection



Respiratory Protection



First Aid



HAND PROTECTION

Selecting versatile safety gloves that have both cut protection and a reliable grip can help protect against cuts, abrasions, lacerations and punctures while working around sharp and rough

materials. Balancing your need for protection with enhanced performance is critical for many workers.

The Honeywell Perfect Fit Gloves, for example, are engineered to be

lightweight, glass fiber-free, and coated with a breathable Polyurethane (PU) coating to enhance the comfort of this glove while giving the user great dexterity and protection.



Perfect Fit



WorkEasy™



CoreShield™

EYE PROTECTION

Effective eyewear protection should safeguard against all the elements in a warehousing environment. It's important for workers to have functional eyewear with a built-in anti-fog solution and indirect venting for all-day comfort. What this means is that your eyewear selection can help to improve time-on-

task. Think about when you go from hot to cold, or dry to wet environments. A foggy lens means a worker stops to wipe them off, exposing them to hazards and affecting their productivity.



Avatar® and Avatar® OTG



SVP 400

HEARING PROTECTION

Balance is also critical with hearing protection. Effective hearing protection that protects against noise exposure and helps reduce unwanted noise without constricting communication is important in a warehouse environment. While normally thought of as a quieter environment as it relates to hearing hazards, a warehouse can really start to hum and the noise builds up if multiple areas like pallet trucks, wrapping

machines and conveyor belts are in operation at the same time. Providing multiple options for employees is critical to ensuring proper fit and helping to keep the employee protected longer. One highly popular disposable earplug for both comfort and attenuation is the Howard Leight Laser Lite® that features a low-pressure, closed-cell foam for enhanced comfort. As for a reusable option that an

employee can don and doff throughout the day when needed, the Howard Leight SmartFit features a unique conforming material technology that softens the material with a worker's own body heat. This patented Conforming Material Technology (CMT) helps create a more unique custom fit and has an attenuation level aligned with lower-exposure environments where communication is necessary.



VeriShield™ 100



SmartFit®



Laser Lite®



FALL PROTECTION & HEAD PROTECTION

When it comes to PPE, reliability is critical. In warehouses, protecting the head and body from falls or objects at height is possibly the most important form of personal protection equipment. Workers on elevated platforms need effective fall and head protection every time they perform their job. It's vital to provide them with the right harnesses and helmets to help keep them safer. And it's equally important that workers comply with PPE use and guidelines.

That's why we design our helmets, harnesses, and self-retracting lifelines (SRLs) to be comfortable, durable and easy to use. Which, in turn, increases compliance. For example, the webbing in the Honeywell Miller® H500 harness flexes to accommodate movement and body contours, helping to maximize worker range of motion and comfort around the legs and shoulders. Another example of innovation for comfort and

mobility is Honeywell Miller adapting Self-Retracting Lifelines into wearable devices, coining the term Personal Fall Limiters (PFLs). The Honeywell Miller® TurboLite™ and the new TurboLite+™ that adheres to the latest ANSI standards are both well-suited for workers who value mobility on the jobsite and need to reduce fall clearance requirements vs. traditional lanyards.



Honeywell Miller® H500



Honeywell Miller® Aircore



SkyORB™



Honeywell North Short Brim Hard Hat

FIRST AID

Emergency Eyewash is vital to any site using corrosive or chemical substances. Even with protective eyewear, accidents happen, and emergency eyewash can help prevent further harm. Delaying treatment can cause irreversible damage to workers' eyes. The Fendall Pure Flow 1000 emergency eyewash station is a favorite for many industrial environments. It delivers the required 15 minutes of flushing with a preserved, buffered, saline solution that is superior to tap water for emergency eye care. (FIRST AID NOT SOLD IN CANADA)



Eyesaline Bottles



Pure Flow 1000 Eyewash Station



Fendall 2000 Eyewash Station



With the multitude of hazards present in warehouse and distribution centers, having the right solutions to help protect your workers is critical. Let Honeywell be your guide to creating a safer working environment. With our legacy as an expert in worker protection and our continued innovation in safety solutions, you can rely on Honeywell for peace of mind in helping provide workers with the safety they need.

You're not just protecting a worker. You're protecting a life.

¹<https://injuryfacts.nsc.org/work/costs/work-injury-costs/>

²www.bls.gov

³Endless Safety Solutions at Your Fingertips -- Occupational Health & Safety, Dec 01, 2021 (ohsonline.com)

⁴<https://www.wbwhite.com/blog/general-category/canadas-dangerous-jobs-2022/>

⁵https://www.uregina.ca/business/faculty-staff/faculty/file_download/2022-Report-on-Workplace-Fatalities-and-Injuries-April-28-FINAL.pdf

⁶https://awcbc.org/wp-content/uploads/2021/09/AWCBC_FactSheet_NWISP_2021-09c_PRINT.pdf

⁷<https://www.statista.com/statistics/873492/total-number-of-warehouses-united-states/>

⁷<https://www.bls.gov/iag/tgs/iag48-49.htm#workforce>

⁸www.bls.gov - Survey by Bureau of Labor Statistics (BLS) of accidents and injuries

⁹www.cdc.gov - Occupational Hearing Loss Surveillance

¹⁰www.safesitehq.com - The Practical Warehouse Safety Guide

¹¹www.bls.gov - Survey by Bureau of Labor Statistics (BLS) of accidents and injuries

For more information

sps.honeywell.com

Honeywell PPE

855 S Mint St
Charlotte, NC 28202
www.honeywell.com