

# HONEYWELL SAFETY SUITE DEVICE MANAGER

Advanced Management For Your  
Honeywell Gas Detector Fleet



**Honeywell**

# COMPLIANCE MANAGEMENT CAN ACTUALLY BE EASY

As a Safety or Operations Manager, in your day-to-day work, you must ensure that workers comply with government regulation and corporate-issued safety policies. As part of this compliance, workers must have equipment that has been maintained properly for use in the field and inspected for safety and training that certifies them to complete certain tasks.

Collecting, analyzing, consolidating and reporting information for gas detector compliance management, especially for large fleets, can be extremely time-consuming. A robust **software solution** that combines powerful reporting capabilities and streamlined device management can be a smart approach to **drive compliance cost savings** by reducing paperwork, preventing shutdowns and fines, and accelerating task completion.

Honeywell Safety Suite Device Manager is our solution to help you optimally monitor your workers' safety and their gas detectors. **Readily available automated reports** and **alarm notifications** accessible via email and SMS give you the desired data wherever you are, to ensure that your workplace is compliant at all times.



## AUTOMATED TASKS, INCREASED PRODUCTIVITY

Honeywell Safety Suite Device Manager generates significant productivity gains by minimizing time spent on the management of your fleet. It allows you to **schedule** several everyday tasks - such as **data download, reporting and firmware updates** - and perform **bulk tasks** across your fleet of portable gas detectors (both BW and RAE), to swiftly bring them in readiness mode.

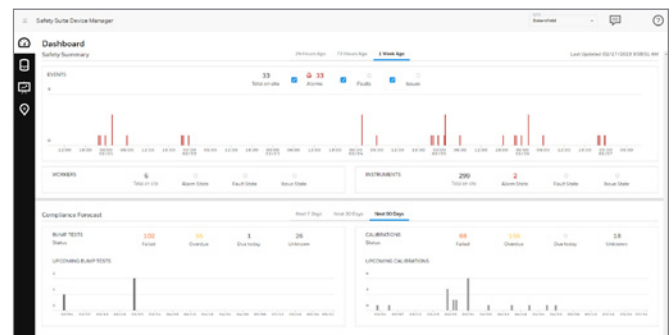
You can also set up specific device groups with different schedules and be notified via email or SMS when individual tasks have been completed. This gives you the flexibility to **run maintenance tasks in the background** while carrying on with other assignments

## CENTRALIZED MONITORING: LESS INCIDENTS, LESS DOWNTIME

Honeywell Safety Suite Device Manager's highly intuitive and user-friendly interface enables you to pull all the necessary data in an intelligent, effective, and time-saving way. Its cloud-based technology allows **accessing and storing data from multiple facilities in a centralized repository** and enabling convenient management of your multi-site gas detection operations.

The system dashboard provides a **consolidated snapshot** of all the alarms, faults and issues, as well as the calibration and bump test status from all your instruments. Drilling-down to view insights on affected workers and instruments enables you to timely investigate areas of concern, prevent further gas leak incidents and worker exposure and manage non-compliant gas detectors.

Moreover, having an **overview** of devices with **overdue, failed and upcoming bump tests and calibration** helps to plan and schedule instrument maintenance more effectively to avoid downtime due to unavailability of compliant instruments.



# OUR SOFTWARE SOLUTION TO LEVEL UP YOUR PORTABLE GAS FLEET MANAGEMENT

**Honeywell Safety Suite Device Manager** enables you to manage your fleet of Honeywell portable gas detectors and docks with ease. It reduces the burden of administration and simplifies compliance, so that you can concentrate on keeping workers safe.



## Advanced Reporting

- Automated reports - summary and device event, calibration and testing
- Centralized report repository enables saving reports for easy access
- Intelligent incident investigation through centralized event reporting

## Centralized Data for Multi-Site Management

- System dashboard allows quick identification of areas of concern
- Never miss an alarm through automated event notifications via email and SMS

- Multi-site data can be accessed at any time from any workplace with Internet connection

## Streamlined Device Management

- Time savings through scheduled, bulk device management
- Increased productivity enabled by enhanced information abstraction
- Easier device configuration using logical data groups
- Reduced maintenance through streamlined Firmware Management

## Secure and Flexible User Management

- Managed access control for increased data security
- Role-based access for information security

## Fleet Management Software Feature Comparison

Honeywell Safety Suite enhances all of the features from Fleet Manager II and ProRAE Studio II – as per the table below.

## Simple and Intuitive User Interface

- Consistent, clear, and concise user interactions
- Minimal training and time is required to use the software

FEATURE	SAFETY SUITE DEVICE MANAGER	SAFETY SUITE DEVICE CONFIGURATOR
Device Configuration – Device & Sensor Configuration	✓	✓
Firmware Management - Updates	✓	✓
Device Maintenance – Gas Configuration, Bump/ Cal Status	✓	✓
Data Management – Store/ Download/ View / Export	✓	✓
Basic Reporting - Event, Calibration, Bump Test	✓	✓
Basic Customization – Reports & User Defined Fields	✓	✓
Basic Schedule Management – Data Download	✓	✓
User Management – Setup Users & Assign Devices	✓	✓
On Premise & Free		✓
Multi-Site Management	✓	
System Dashboard	✓	
Enhanced Reporting - Repository & Historical Reporting	✓	
Enhanced Schedule Management	✓	
Notification Management	✓	
Designed to Handle High Instrument Volumes	✓	
Fault Tolerant to Support 24x7 Operation	✓	
Ubiquitous Access (Browser, Tablet, Smartphone)	✓	
Zero Installation, Upgrade & Maintenance Overhead	✓	
Cloud & Paid	✓	



# HONEYWELL SAFETY SUITE DEVICE MANAGER SETUP

Honeywell Safety Suite Device Manager (Cloud-based offering) is deployed using an on-premise component (Safety Suite Gateway) that is required to capture the data from the devices at the client location, as illustrated by the enclosed diagram. The specifications below correspond to Safety Suite Gateway.

## HARDWARE REQUIREMENTS

- CPU, 1.0 GHz or better
- Color monitor (at least 1366x768 resolution, 16-bit color)
- 2 GB RAM
- At least 4GB of free hard disk space\*
- USB port for instrument/dock station connection
- Intel® Wireless Bluetooth® Adapter for instrument BLE connectivity
- LAN connection for network-connected dock stations
- Internet connection

## SOFTWARE REQUIREMENTS

### Operation Systems

- Microsoft® Windows® Server 2012 R2 or above; Microsoft® Windows® 10 64-bit version 1809 or above
- Intel® Wireless Bluetooth® Driver: 21.60.0 or above
- Net Framework V4.6.1or above (can be installed with Honeywell Safety Suite Gateway installation)

### Supported Browsers for Accessing the Software

- Google Chrome and Microsoft Edge

## Find out more

For more information visit:

<https://sps.honeywell.com/en-us/software-and-services/connected-safety/safety-suite>

## Europe, Middle East, Africa

[gasdetection@honeywell.com](mailto:gasdetection@honeywell.com)

## Americas

[detectgas@honeywell.com](mailto:detectgas@honeywell.com)

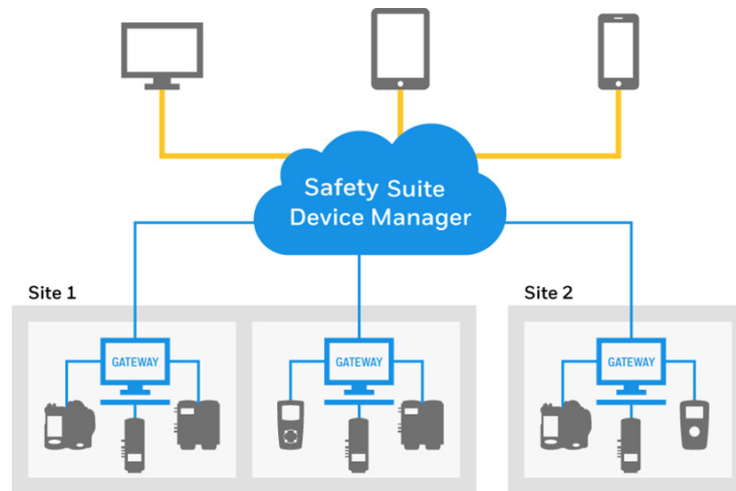
## Asia Pacific

[analytics.ap@honeywell.com](mailto:analytics.ap@honeywell.com)

## Technical Support

[support.safetysuite@honeywell.com](mailto:support.safetysuite@honeywell.com)

1-833-556-3515



## USER PRIVILEGE REQUIREMENTS

During installation, you must have administrator privileges on the local PC. *Note: Administrator privileges are not required in order to run the program from desktop.*

\* Software installation only. Honeywell Safety Suite Device Manager may require significantly larger amounts of disk space to store device data and other software data.

## EASY DATA TRANSFER

- By Ethernet or USB – from docking module to computer. Refer to individual docks for specification
- By USB for direct instrument connectivity using BW IR Dongle and RAE Travel Charger

Microsoft and Windows are trademarks or registered trademarks of Microsoft Corporation in the United States and/or other countries. All other trademarks are the property of their respective owners.

Note: Due to ongoing research and product improvement, specifications are subject to change without notice.

Safety Suite Device Manager Brochure | Rev A | 06/07  
© 2021 Honeywell International Inc.

Device Management with  
Honeywell Safety Suite



**Honeywell**