

GET A COMPETITIVE EDGE WITH ROBOTIC SOLUTIONS.



Honeywell
Intelligent[®]

HONEYWELL ROBOTICS SOLUTIONS

RESULTS-DRIVEN ROBOTICS

Scalable robotic solutions increasingly deliver significant competitive advantages to modern distribution centers. By leveraging advanced robotic technology with extensive material handling experience, warehouse automation solutions from Honeywell Robotics offer fully integrated, end-to-end strategies designed specifically for the unique needs and challenges of DCs. These solutions provide the speed, accuracy and efficiency to satisfy a broad and growing range of operational requirements.

Innovative designs, application expertise and committed support ensure maximum dependability and round-the-clock productivity. A diverse robotics portfolio ensures these systems can be customized to your unique needs. Robotic solutions also relieve workers of some of the most arduous, repetitive and injury-prone tasks, freeing up limited labor for more rewarding, higher-value jobs.

Honeywell Intelligrated is recognized by the Robotic Industries Association (RIA) as a Certified Robot Integrator, with more than a quarter-century of experience providing single-source robotic solutions for high-performance distribution and manufacturing operations. From system concepting, simulation, fabrication and integration to installation and commissioning, training and ongoing support, each solution is approached with a comprehensive lifecycle view to maximize the value of your system.

PRODUCTIVITY AND PRECISION IN ANY APPLICATION

Multiple solutions from Honeywell Robotics provide flexible, scalable options for a variety of applications, including:

- **Loading and unloading** — Autonomously load and unload trailers with minimal operator supervision or intervention.
- **Sorter induction** — Automate induction of boxes, polybags and jiffy bags, increasing volume and accuracy while improving efficiency of downstream sortation systems.
- **Each picking** — Identify, pick and place individual items.
- **Mobile robotics** — Transport loads, handle carts, and perform RFID scans with autonomous mobile robots (AMRs).
- **Palletizing** — Efficiently build stable pallet loads according to operational requirements.

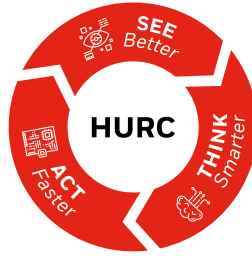
INDUSTRIES SERVED:

- Food
 - Beverage
 - Consumer packaged goods
 - Pharmaceutical and medical supply
 - Retail
 - E-commerce
 - Wholesale
 - Post and parcel
 - Third-party logistics
- **Depalletizing** — Quickly unload full layers or individual products from pallets.
 - **Case packing and unpacking** — Singulate or pack products in preparation for downstream processes.





CERTIFIED
Robot Integrator ●●



CERTIFIED FOR SEAMLESS INTEGRATION

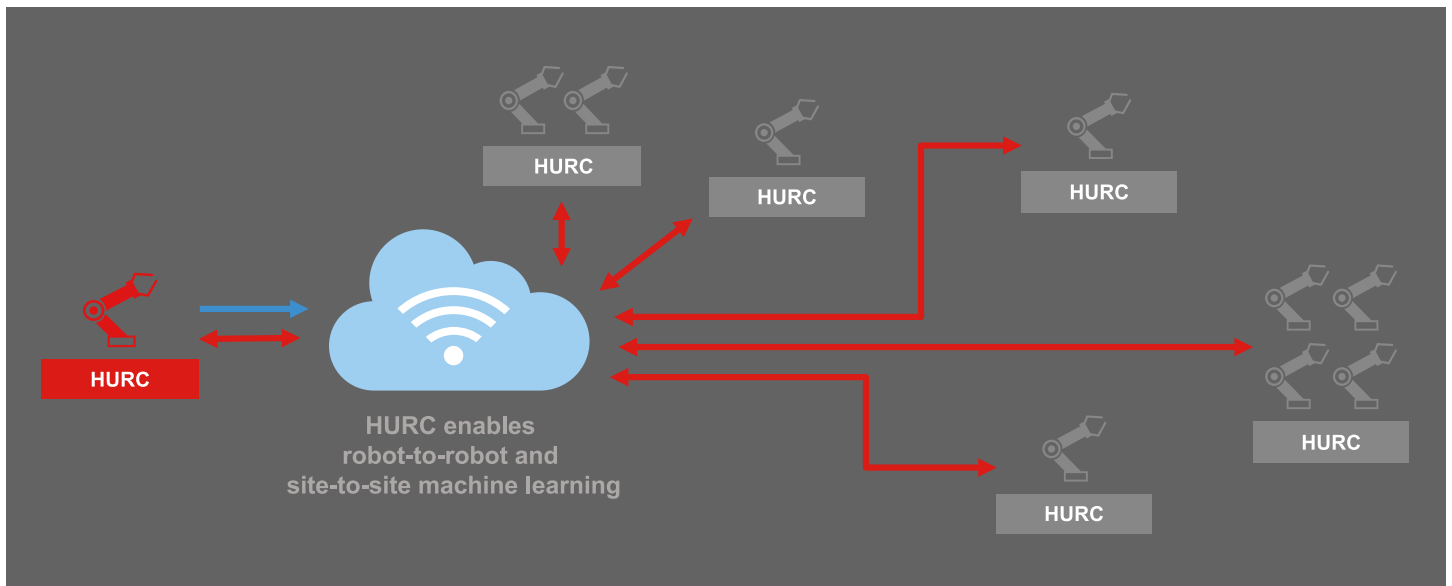
Honeywell Intelligrated is an RIA-Certified Robot Integrator, with extensive experience implementing robotic solutions that work seamlessly with existing automation equipment. Robotic systems come with integrated software and controls, enabling easy training, simple daily use and straightforward maintenance.

EVALUATE PERFORMANCE BEFORE YOU BUY

Before you invest in a new automation system, Honeywell Robotics offers you the option of a customized, data-driven simulation. This approach is designed to help you choose the optimal level of automation based on the unique needs of your operation.

Using these simulation tools, you can determine how different solutions will perform and learn how quickly you'll see return on your investment. You'll get estimates of rates and throughputs based on your own unique product mix.

Simulations can identify where robots will provide the greatest benefit and show where conveyors, storage systems or other solutions might be most effective. You also can calculate how many people automation will free up for safer and higher-value jobs. These powerful development tools ensure that you get the right solution, without having to rely on trial and error.





ROBOTIC UNLOADING

Advanced machine learning enables robotic unloaders to unload trucks, trailers and shipping containers in less than half the time it would manually while handling products with greater care. Using a combination of vacuum arms and a conveyor sweep system, these robots are capable of handling diverse case sizes and weights, even from trailers that haven't been loaded with robots in mind. Products are discharged in a semi-singulated flow, improving the efficiency of downstream processes, and no fleet modifications are required.



ROBOTIC SORTER INDUCTION

The Honeywell Robotics sorter induction can handle a variety of common package sizes and types, including boxes, polybags and jiffy bags. Designed to fit existing workflows and work with the typical products seen in postal and e-commerce applications, the solution keeps both integration costs and technical risks low. Automated label orientation improves the efficiency of sortation systems further down the line, while optimized sorter tray loading enables your site to handle larger product volumes.

GOODS-TO-ROBOT ORDER PICKING TECHNOLOGY

AI-powered autonomous robots use sophisticated gripping and vision technologies to augment your human workforce in each picking applications. Integrated in partnership with Soft Robotics, these picking robots are able to grasp objects with dexterity comparable to the human hand, retrieving, sorting and fulfilling orders at rates of more than 600 picks per robot per hour.

Cutting-edge visual recognition enables these robots to pick from heterogenous or homogenous bins of product with little or no human supervision. On the rare occasions when a robot needs help, workers can handle exceptions remotely via a simple user interface.

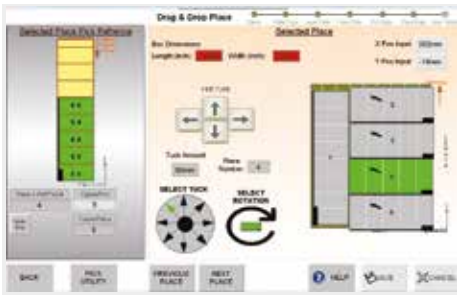


MOBILE ROBOTICS

Supplied in strategic partnership with Fetch Robotics, these autonomous roving vehicles are capable of transporting loads up to 1,500 kilograms. Vision and mapping technologies enable robots to perceive and navigate warehouse environments without requiring changes to your facility's infrastructure. They're intelligent enough to recognize and avoid everything from people to fork truck tines.

Mobile robots can be inserted into a DC with little or no new infrastructure, requiring only a short integration period to learn their surroundings. A variety of top-mounted attachments enable the robots to perform multiple applications, including cart handling, conveying and RFID scanning.





ROBOTIC PALLETIZING AND DEPALLETIZING SOLUTIONS

Robotic palletizing and depalletizing solutions from Honeywell Robotics increase throughput and improve ergonomics while reducing your operational costs. Our robotic solutions automate the labor-intensive tasks of stacking and unstacking a broad range of products, packaging types and configurations. SKU proliferation, international markets or other complexities are easily accommodated. Modular designs offer compact footprints and can scale from a single robot to large multi-arm systems as your future growth demands.

- **IntelliGen™ palletizing software** — Enables easy adaptation of pallet load configurations and stacking patterns based on product size, packaging changes or other variables.

- **Mixed-load or mixed-case order fulfillment** — Efficient replenishment and delivery with less-than-full pallet loads of mixed product and labels-out configurations for retail display.
- **Stack-and-wrap robotic palletizing cell** — Builds pallet loads with increased stability and higher sustained throughput, while allowing a single operator to monitor multiple functions.
- **Pallet and sheet handling** — Boost speeds and reduce costs by automating the insertion of slip sheets, tiersheets and empty pallets into robotic palletizing cells.

ARTICULATED ARM LOADING/ UNLOADING

In situations where trailers transport stacked products of a consistent size, vehicle-mounted articulated arms can do double duty by both loading and unloading trailers. These robots operate quickly and require minimal operator supervision or intervention, with no need to change processes or add supporting equipment.





SOLUTIONS OVERVIEW

Intelligent automated material handling solutions from Honeywell Intelligrated optimize processes, increase efficiency, and give businesses a competitive edge. Honeywell Intelligrated designs, manufactures, integrates and installs complete warehouse automation and software solutions, including:

- Warehouse execution systems
- Honeywell Robotics
- Fulfillment technologies
- Voice solutions
- InControlWare® machine controls
- IntelliSort® sortation systems
- Conveyor and pallet conveyor systems
- Alvey® palletizers
- Automated storage and retrieval solutions (AS/RS)
- Labor management software
- IN-24X7® Technical Support

LIFECYCLE SERVICES

Honeywell Intelligrated Lifecycle Support Services provides all the services, parts and support needed to keep systems running at peak efficiency. Staffed with a network of Honeywell Intelligrated professional Lifecycle Support specialists, multilingual customer service is accessible 24X7 with a single number to call: +1 877.315.3400.

THE CONNECTED DISTRIBUTION CENTER

The pace of change in modern commerce is putting tremendous pressure on fulfillment operations. To stay competitive and protect profits, companies need solutions that help them achieve maximum throughput, day-to-day flexibility, future-proof scalability and intelligence to make informed decisions.

The Connected Distribution Center helps companies make the digital transformation necessary to increase reliability, improve utilization and maximize productivity through:

- Intelligent, data-driven, high-speed execution
- Automated, adaptable processes for machines and workers
- Optimized utilization with the ability to seamlessly adapt and expand
- Insights and predictive analytics, from sensors to the cloud

Honeywell Intelligated

+1 866.936.7300

info@intelligated.com

www.intelligated.com

Follow us on Twitter: <https://twitter.com/intelligated>

Learn more on YouTube: [Honeywell Intelligated](https://www.youtube.com/intelligated)

GCEB | 02.20

© 2020 Honeywell International Inc.

THE
FUTURE
IS
WHAT
WE
MAKE IT

Honeywell
Intelligated®