

MODULAR PARTS

complete switch = operating head + base receptacle + switch body

Complete Switch	Description	Operating Head Only
LZA1	Side Rotary	LZZ1A
LZC1	Top Plain Plunger	LZZ1C
LZD1	Top Roller Plunger, roller parallel to mounting surface	LZZ1D
LZV1	Adjustable Top Plunger	LZZ1V
LZE1	Side Plain Plunger	LZZ1E
LZF1	Side Roller Plunger, roller parallel to mounting surface	LZZ1F
LZG1	Side Roller Plunger, roller perpendicular to mounting surface	LZZ1G
LZW1	Adjustable Side Plunger	LZZ1W
LZH1	Side Palm Plunger	LZZ1H
LZL1-6C	Side Lever with lever bracket	LZZ1M-6C

REPLACEMENT PARTS

Description	Catalog Listing
Body with basic switch (Buna-N seal)	LZZ21
Body with basic switch (Fluorocarbon seal)	LZZ22
Base Receptacle	LZZ41
Adapter Plate	LZZ42
Lever bracket (without lever)	LZZ43
Lever arm for above	
Nylon roller	LZZ56C
Steel roller	LZZ56D
Boot for plungers	LZZ44
Plastic wobble stick	LZZ57B
Spring wire wobble stick	LZZ57M
1 1/4 inch buttons	
Black	PWMZ22
Red	PWMZ23
Yellow	PWMZ25
1 1/2 inch buttons	
Black	PWMZ32
Red	PWMZ33
Yellow	PWMZ35

REPLACEMENT LEVERS FOR SIDE ROTARY

To order replacement levers, order the same part number as that which is metal stamped on either the lever or lever hub. For other variations of levers, refer to Heavy Duty LS in Catalog 40.

MICRO SWITCH WORLDWIDE SALES AND SERVICE

MICRO SWITCH serves its customer through a worldwide network of sales offices and distributors. For application assistance, pricing or name of nearest Authorized Distributor, contact a nearby MICRO SWITCH sales office. Or, write MICRO SWITCH, Freeport, Illinois 61032; phone 815/235-6600.

While we provide application assistance on MICRO SWITCH products, personally and through our literature, it is up to the customer to determine the suitability of the product in his application.

Installation and adjusting instructions
LZ metal-enclosed switches

MOUNTING

LZ may be mounted without unplugging the body from the base receptacle. Use two M5 or #10 screws that are at least 32mm (1.25 in.) long. A third mounting screw may be used by removing the knockout in the lower right corner. Refer to Figure 1.

WIRING

Up to 3mm or AWG12 wire may be used for wiring to the self-lifting pressure plate-type screw terminals. Maximum width of spade connectors or diameter of ring connectors is 8mm (.312 in.). A ground terminal, which is colored green for easy identification, also has self-lifting pressure plate-type construction (refer to Figure 1.).

After wiring, securely tighten the captive screws in the plug-in unit for effective sealing. Also plug conduit opening with sealant to ensure proper sealing.

ADJUSTMENT INSTRUCTIONS

Actuator Head

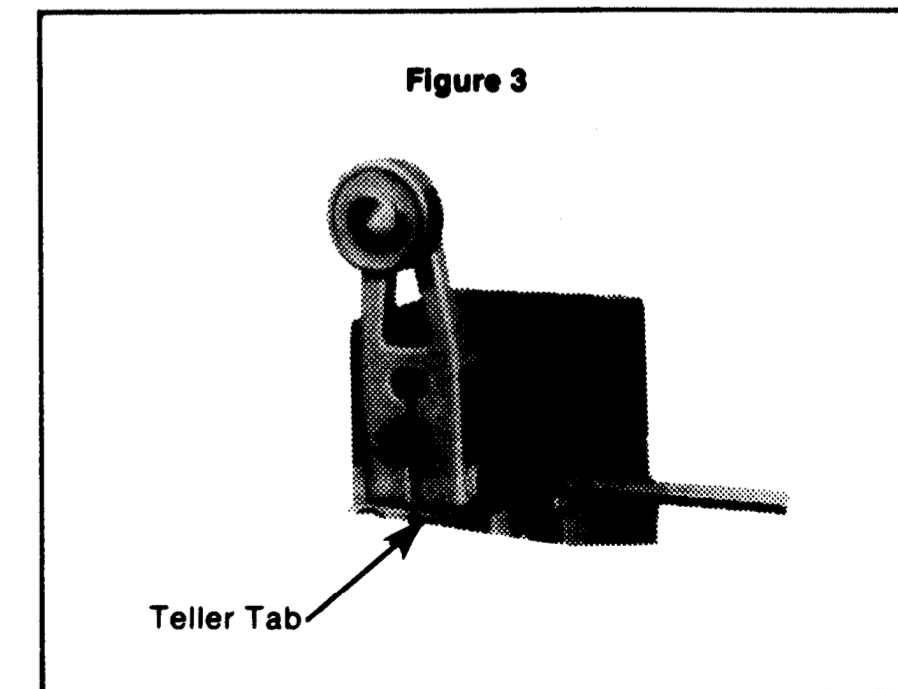
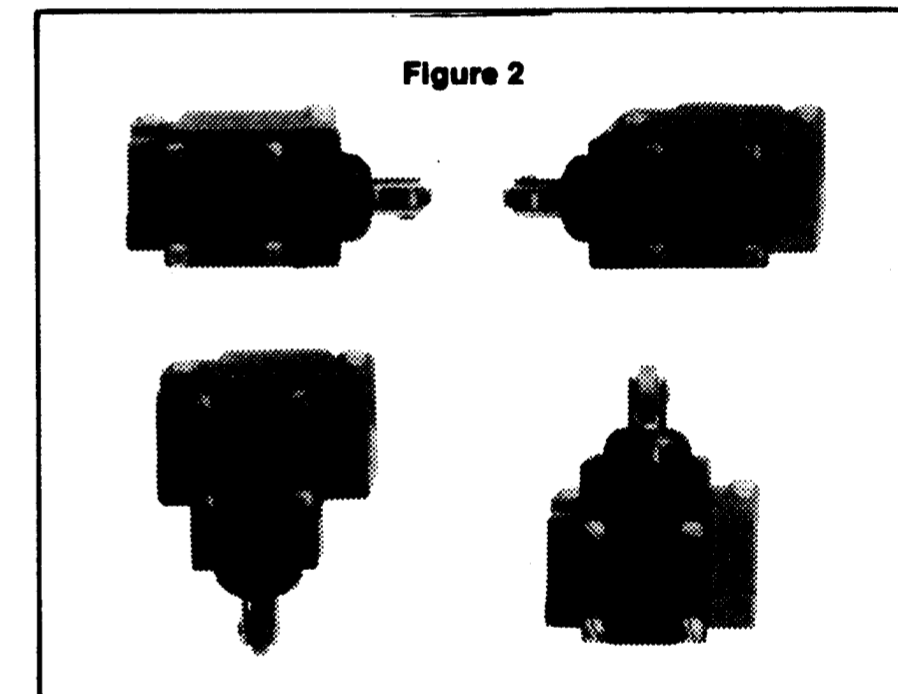
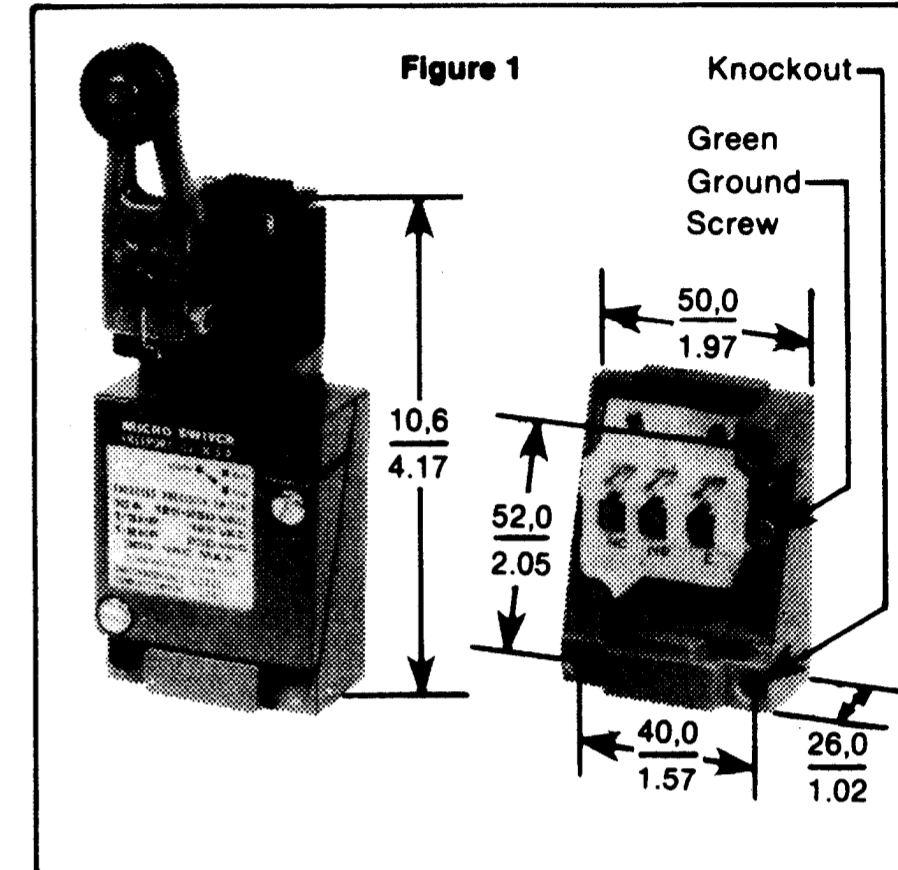
All LZ actuator heads can be positioned in any of four directions. Loosen the four captive head screws, place the head in the desired position, and securely tighten the screws. Refer to Figure 2.

Top Roller Plunger

Position the top roller plunger in the desired plane by locating the head as outlined under Actuator Head.

POSITIONING LEVER OF ROTARY TYPE

The lever on rotary switches is adjustable to any angular position through 360°. Levers are reversible, they can also be shifted axially through approximately 3,2mm (.125 in.) on the shaft. To adjust, or to assemble to switch, loosen the screw with a 9/64 hexagon key wrench, move the lever to the desired position, and securely tighten the screw. The lever should be tightened until the "teller tab" can no longer be moved by hand. Hex key wrenches are provided in adjusting tool set LSZ4005.



SIDE ROTARY TYPE

CHANGING ACTUATION DIRECTION ON ROTARY TYPE

Rotary switches may be adjusted to operate clockwise, counterclockwise, or both. Instructions are cast into the head (Figure 4). Follow these steps:

1. Loosen the four captive head screws and remove head from switch housing.
2. Switches are assembled with the plunger set for both way operation. (See drawing Figure 4.)

Both way actuation: plunger point in twelve o'clock position (towards the actuator).

To change mode of operation pull the spring loaded plunger outward with pliers to the stop. With plunger, pulled turn the point in the direction of operation required.

Clockwise actuation only: turn clockwise to three o'clock position.

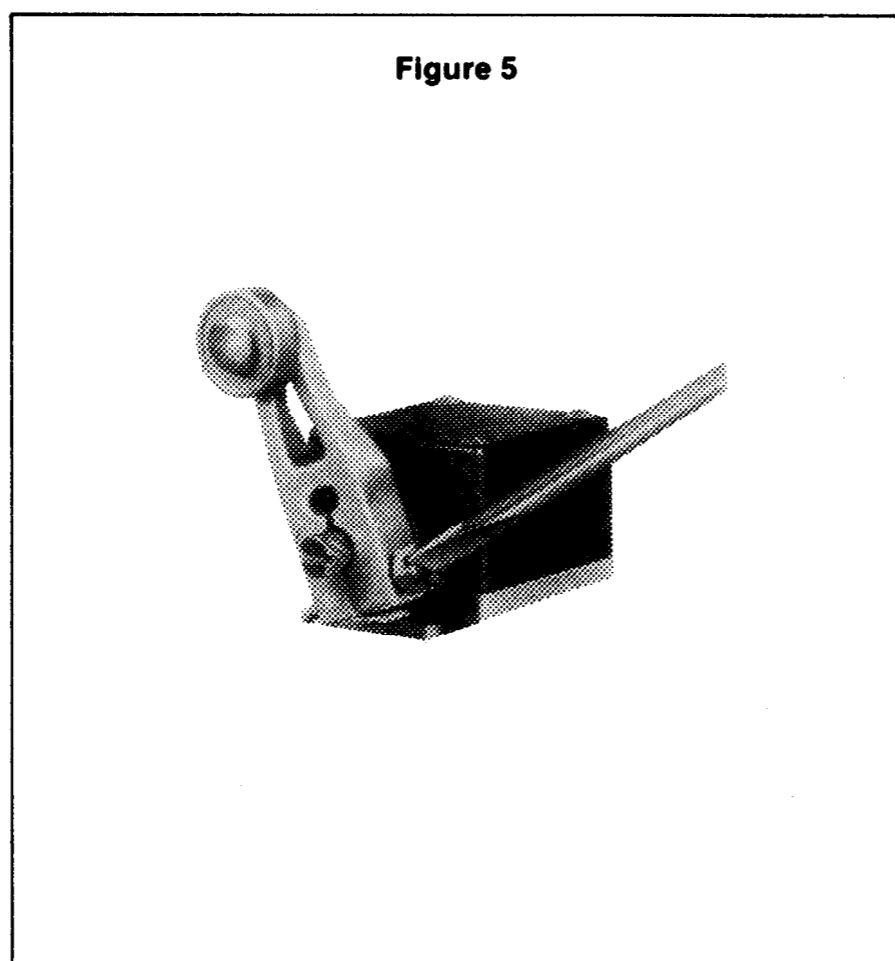
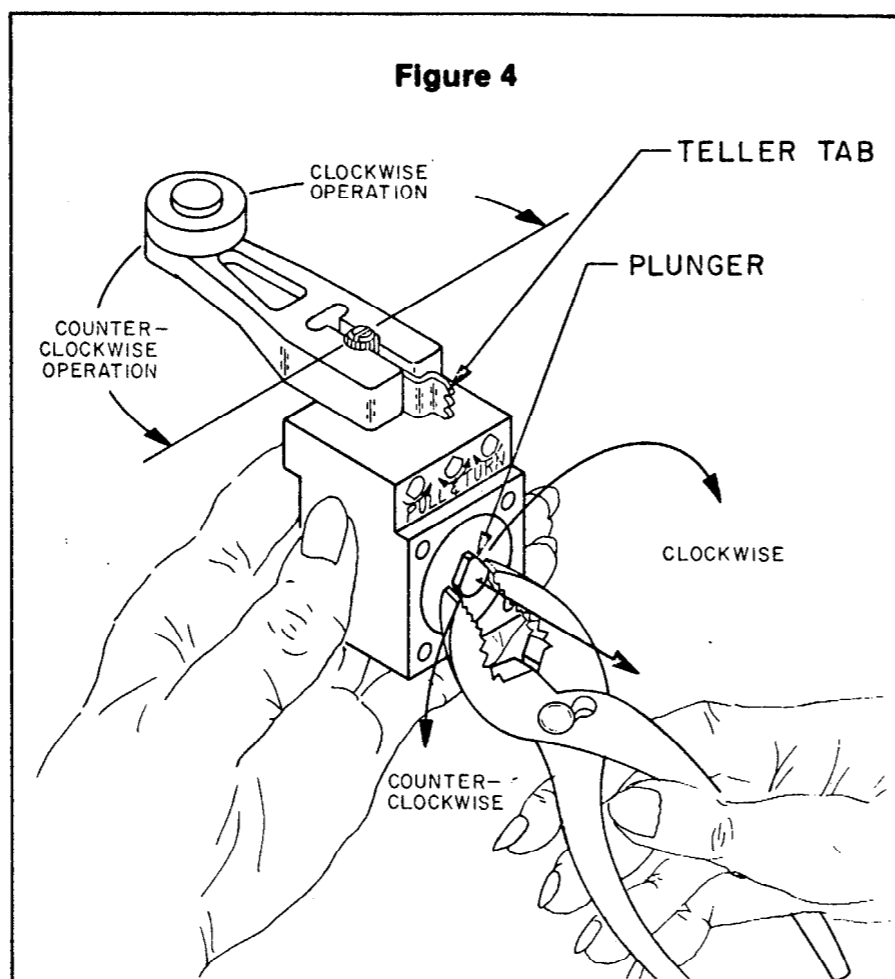
Counterclockwise actuation only: turn counterclockwise to nine o'clock position.

3. Release plunger, it will snap into the head into a locked position.
4. Replace operating head on switch housing and securely tighten screws.
5. Check for desired operation by actuating switch and listening for "click".

HEX HEAD SCREWS

If you prefer to loosen and tighten the lever with a pliers or a screwdriver, a packet of 50 hex head screws, with screwdriver slot, is available separately (catalog listing 15PA164-LS) to replace the allen head screw furnished with the lever.

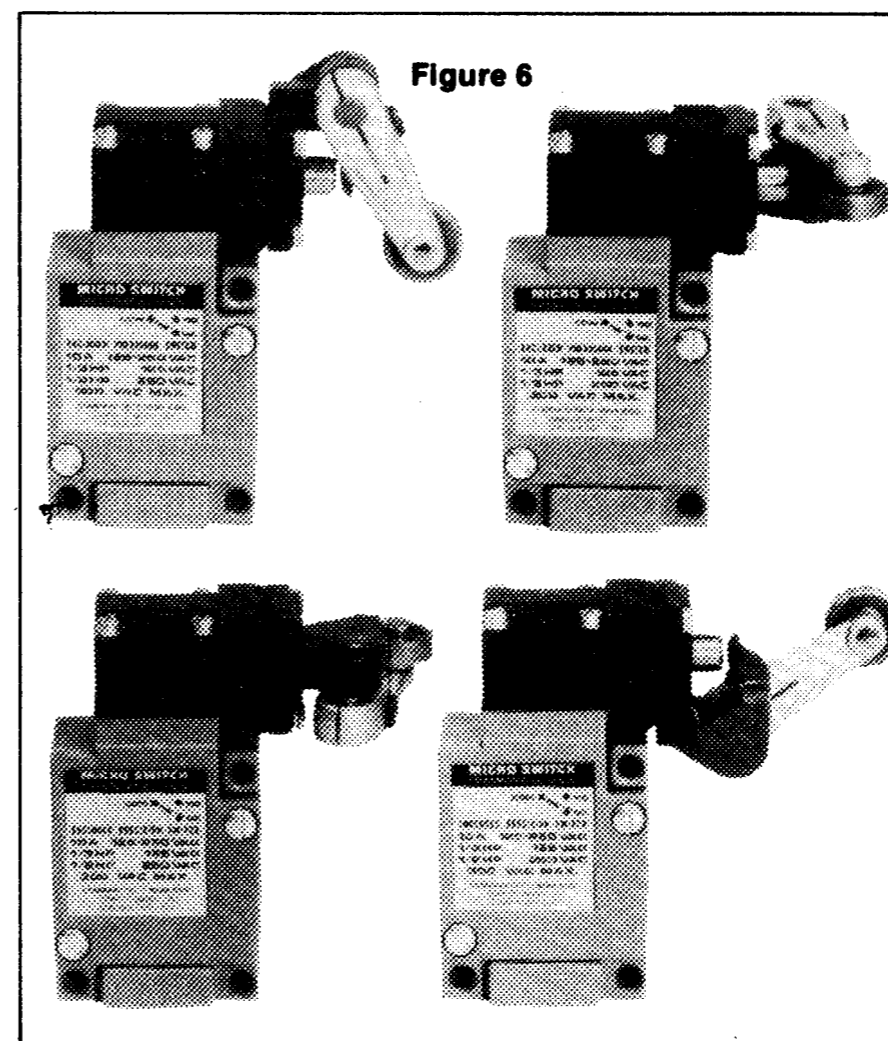
Adjusting tool set LSZ4005 consists of one special 3/32 inch open wrench and necessary hexagon key wrenches to adjust all types of levers.



SIDE LEVER BRACKET TYPE

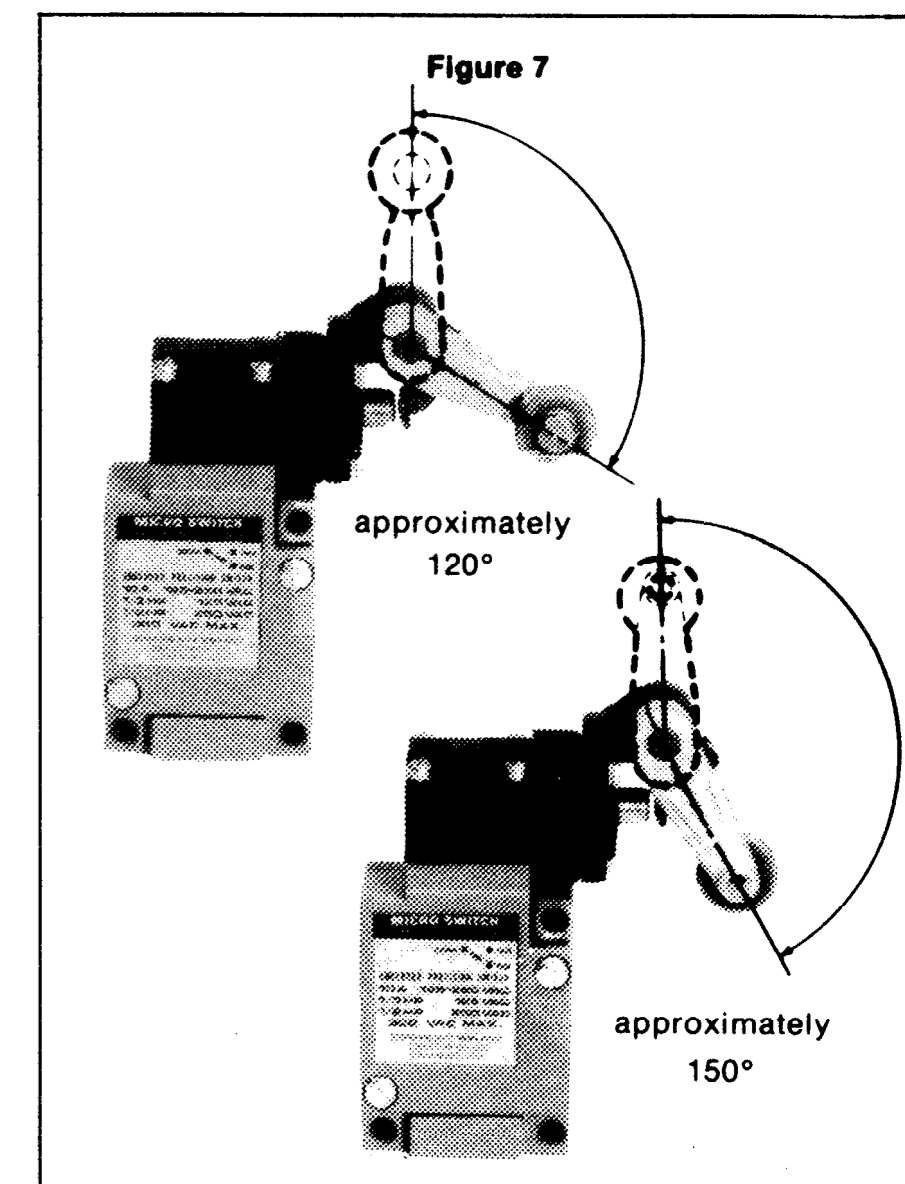
POSITIONING THE SIDE LEVER BRACKET

The side lever bracket can be placed in any of four positions. When combined with the four possible head positions, this makes for 16 possible positions for this type. Remove the lever with a 5/32 inch hexagon key wrench. Loosen three captive bracket screws, place the bracket in the desired position, and securely tighten the screws (refer to Figure 6).



REVERSING THE ROLLER LEVER ARM

Roller arms may be reversed to face the roller to the inside or outside of the arm (refer to Figure 7). It is recommended that the lever of side lever bracket forms be adjusted within the parameters shown in Figure 7. Use a 5/32 hexagon key wrench.



WOBBLE STICK ACTUATOR TYPE

REPLACING THE WOBBLE STICK

To remove a wobble stick, firmly grasp the wobble stick with a pair of pliers at the base of the wobble stick. (Figure 8, View A.) Turn the wobble stick counterclockwise to unscrew it.

To attach a wobble stick, start threading the actuator to the head by hand. Then firmly grasp the wobble stick with a pair of pliers as shown in Figure 8, View B. Turn the wobble stick clockwise to within 1/8 inch of the end of the threads.

