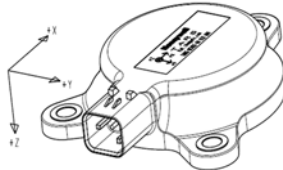


# TARS Configurator Tool (TCT) Overview/Installation Information

## **OVERVIEW**

The TCT is a PC application that enables the user to view, edit, and create personality files to customize parameters of the Honeywell TARS-IMU.



## **TARS Personality Files**

Personality files contain settings for all user selectable features of the Honeywell TARS-IMU product. The file is stored using common memory storage formats: Motorola S record (.srec) or Intel Hex format (.hex).

## **J1939 Transfer to/from Product**

Using the standard firmware download features in the J1939-73 layer, users may transfer the personality file to and from the TARS-IMU product via the various methods:

- Users may use their own tools
- Diagnostic tools may be used
- Honeywell TCT or Honeywell J1939 Bootloader software tool

Data transfer does not interfere with normal operations

- May be used at point of installation
- May be used by onboard ECU in equipment

Operates while installed on vehicle.

## **TARS Configurator Tool Functions**

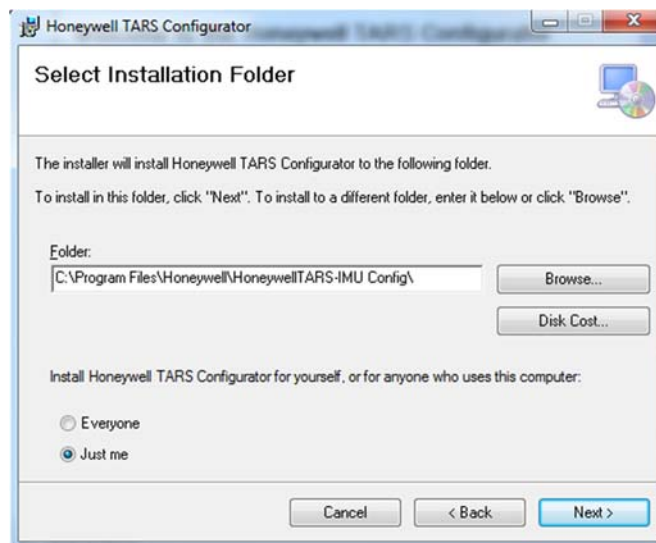
1. Reads, writes, edits, and creates TARS-IMU personality files
2. Enables user selection of values for the following parameters:
  - J1939 Preferred Address
  - CAN Baud Rate
  - CAN Broadcast Rate
  - Mounting orientation at which pitch & roll outputs are zero
  - Axes sign convention for accelerometer and gyroscope outputs
  - Signals to broadcast
  - Data to broadcast (raw, filtered)
  - Data fusion model settings
  - Application of filters (including user created filters)

## **INSTALLATION INSTRUCTIONS**

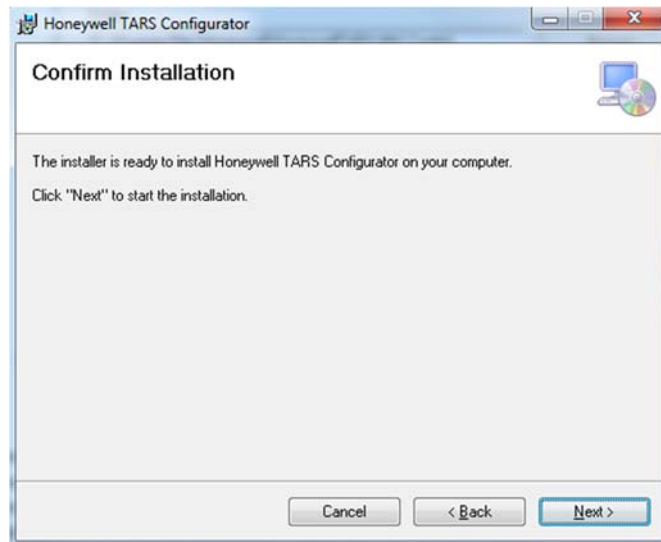
1. Install the TARS-IMU Configuration Tool 5.1.0.msi
  - a. Double-click on "TARS-IMU Configuration Tool 5.1.0.msi"



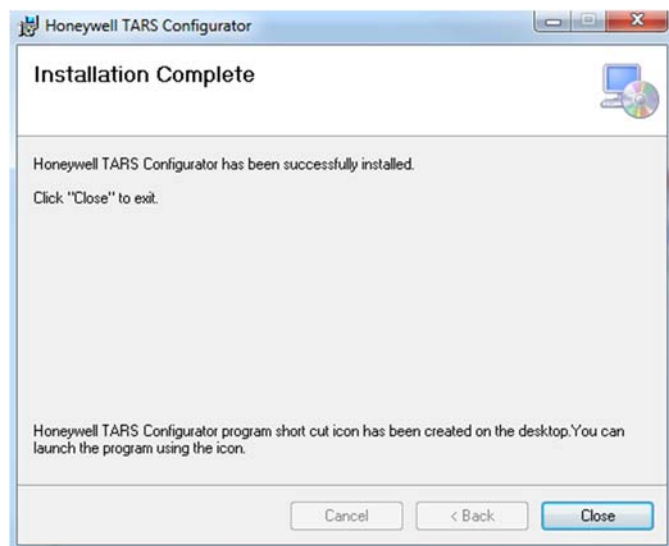
- b. Select Next



- c. Select Next



- d. Select Next



- e. Select Close after installation
- f. Installed files will be at the following location  
C:\Program Files\Honeywell\HoneywellTARS-IMU Config\
- g. The following shortcuts will be located on the desktop and in the program list:
  - i. TARS Configurator
  - ii. J1939-Bootloader-PCAN.exe
  - iii. J1939-Bootloader-VectorCAN.exe
  - iv. TCT User Manual (program list only)

## OVERVIEW OF SET-UP

### Required components:

1. Honeywell TARS-IMU
2. Power source
3. PC with Windows Operating System
4. TARS Configurator Tool
5. CAN hardware interface (PCAN or Vector)
6. If not installed, download and install drivers for CAN hardware interface (refer to pages 6 - 8)
7. USB A-B cable
8. CAN bus

Diagram 1 - CAN interface configured to provide supply voltage

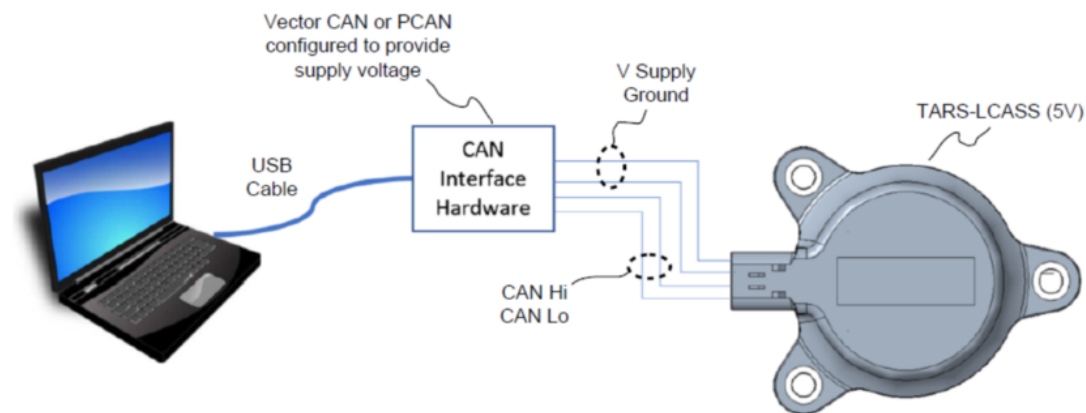
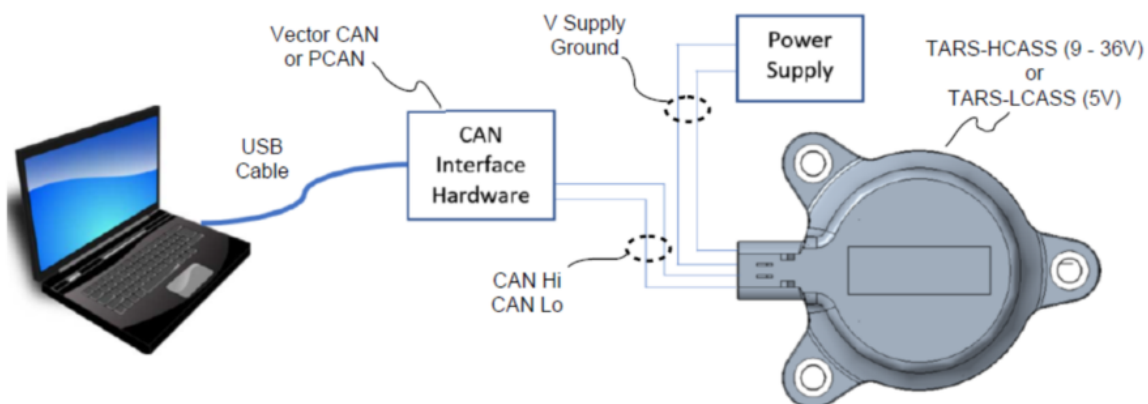


Diagram 2 - General setup with separate power supply



**NOTE:** For detailed information on the functionality of the TARS Configurator Tool, please refer the user manual attached in the **Help / View Help** section of TARS Configurator.

PCAN driver download link:



<https://www.peak-system.com/Downloads.76.0.html?&L=1>

Navigation menu: HOME COMPANY PRODUCTS SERVICES SUPPORT FORUM CONTACT

**General**

► Browse Product DVD			Website
Price lists	German	English	
Product catalog (High Quality)	German	English	French
Product catalog (Low Quality)	German	English	French
ISO 9001:2015 Certificate	German	English	French
ISO 14001:2015 Certificate	German	English	French
► General Terms of Business	German	English	French

**Packages**

▼ **Device driver setup for Windows** Download

PEAK-System installation package for device drivers and tools for Windows® 10, 8.1, 7 (32/64-bit) for our PC interfaces.

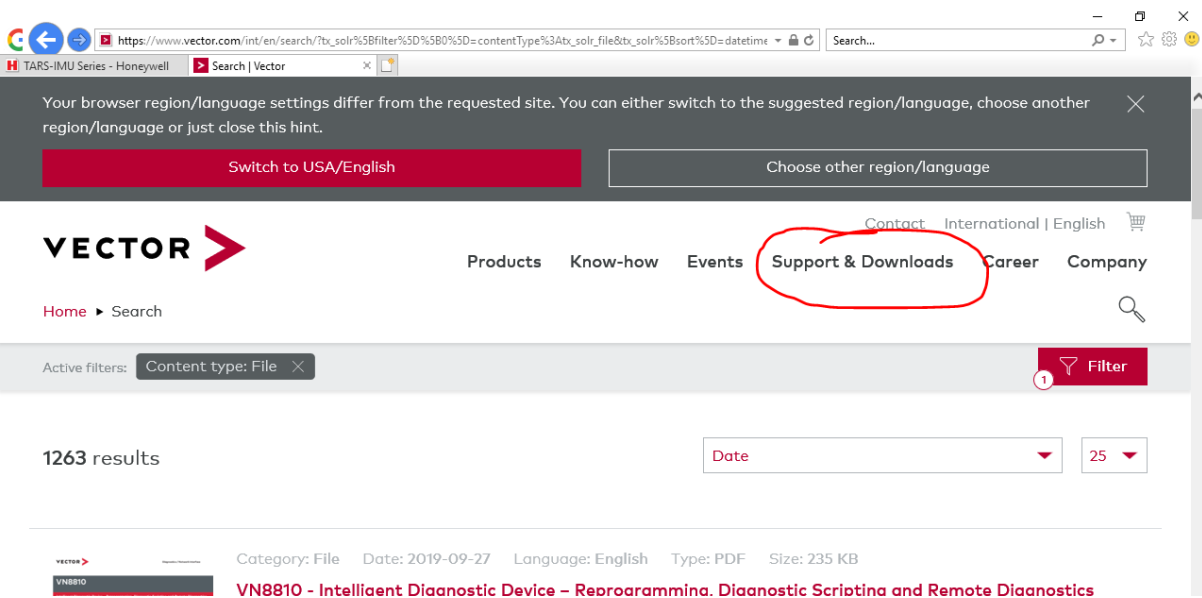
► Device driver for Linux	Website
► RS-232 device driver for Windows and Linux	Download
► Windows CE6 package	Download
► Windows 2000 package	Download
► PCAN-Diag 2 package	Download
► PCAN-Diag FD package	Download
► PCAN-Ethernet Gateway DR package	Download

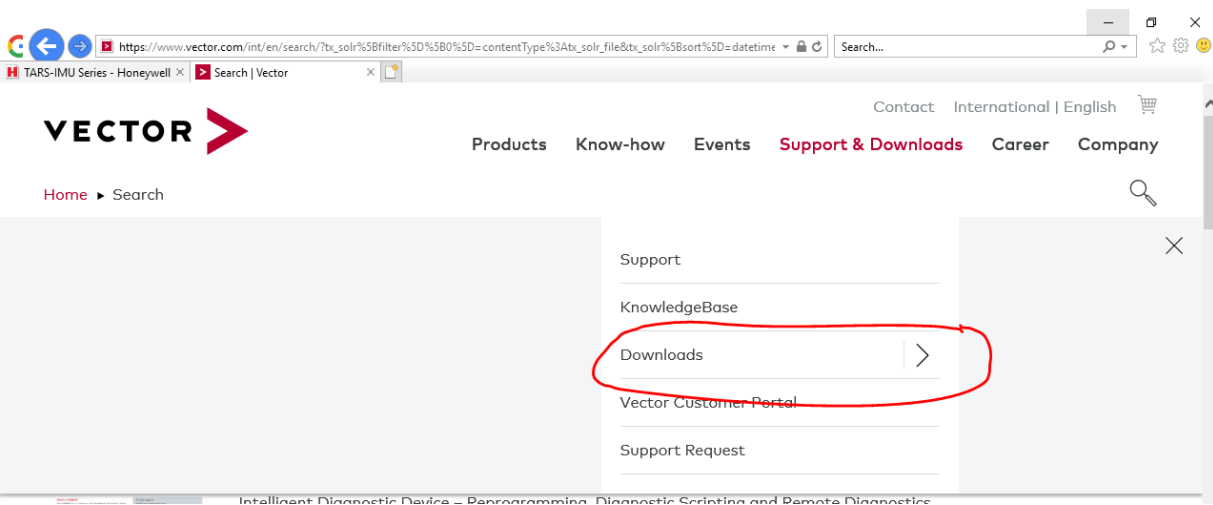
fileadmin/media/pdf/certificates/PEAK-System\_ISO-14001-2015\_DEU.PDF; Gateway DR package Download

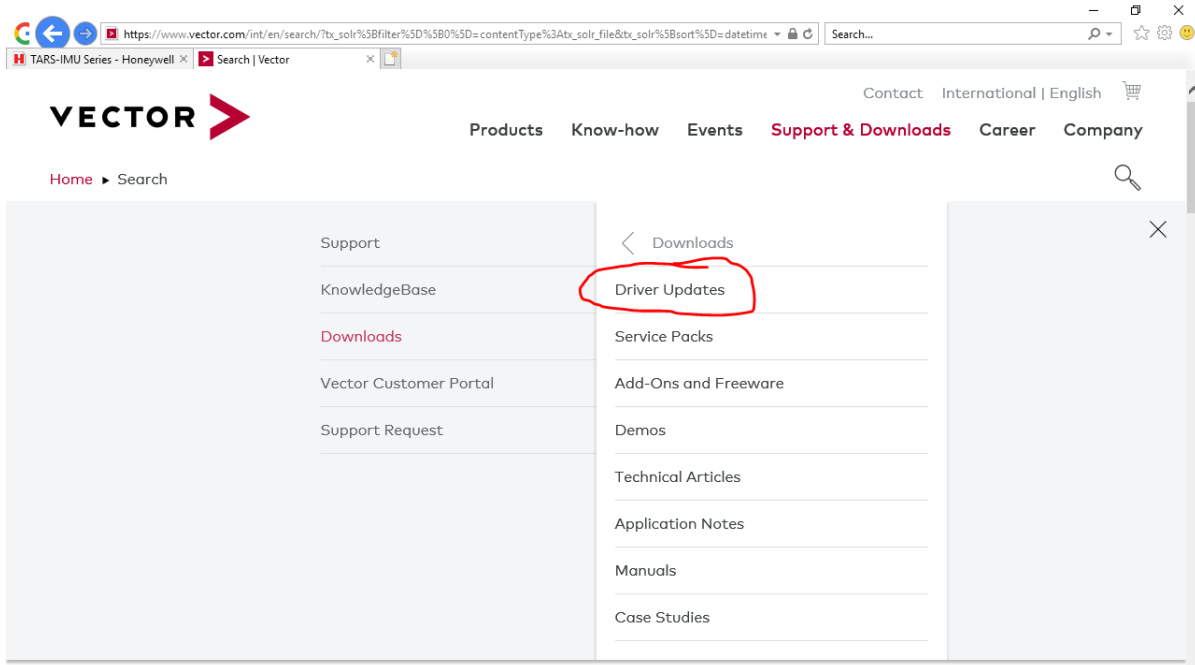
## Vector CAN driver download link:



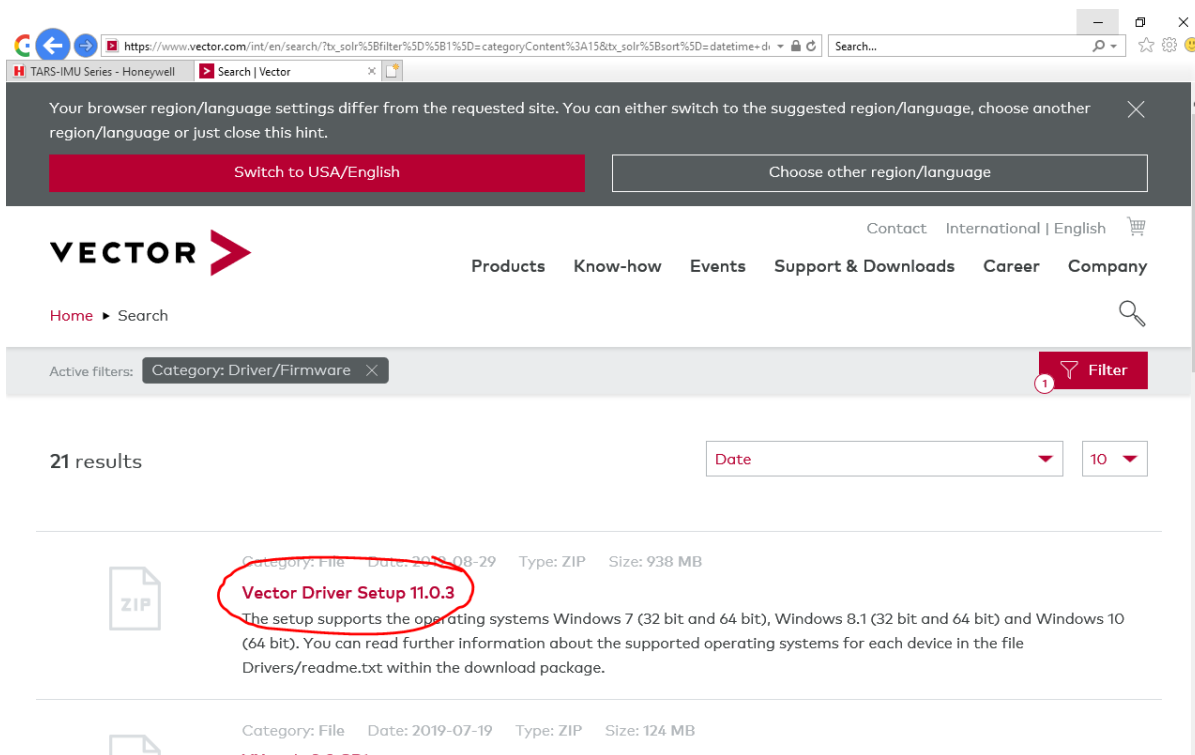
[https://vector.com/vi\\_downloadcenter\\_en.html](https://vector.com/vi_downloadcenter_en.html)

1. 

2. 



3.



4.